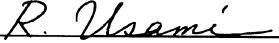




SERVICE BULLETIN

QUALITY INFORMATION ANALYSIS
OVERSEAS SERVICE DEPT. MITSUBISHI MOTORS CORPORATION

SERVICE BULLETIN			No.: MSB-97E52-501		
			Date: 1997-11-24	<Model>	<M/Y>
Subject: CORRECTION TO CAUTION ON AIR BAG MODULE AND CLOCK SPRING				(EC,EXP)L400	96-10
				(PA0V)	92-10
				(EC,EXP)PAJERO	91-10
				(V10,V20,V30,V40)	96-10
				(EC,EXP)SIGMA	96-10
				(F10,F20)	
				(EC,EXP)COLT	
				(CJ0A)	
				(EC,EXP)LANCER	
				(CK0A)	
				(EC,EXP)GALANT	
				(EA0)	
Group: SUPPLEMENTAL RESTRAIN		Draftno: 97-AL-019			
CORRECTION	OVERSEAS SERVICE DEPT	 R. USAMI - MANAGER QUALITY INFORMATION ANALYSIS			

1. Description:

This Service Bulletin informs you that caution on air bag module and clock spring has been corrected.

2. Applicable Manuals:

Manual	Pub. No.	Language	Page(s)
'97 GALANT Workshop Manual chassis	PWDE9611	(English)	52B-32
	PWDS9612	(Spanish)	
	PWDF9613	(French)	
	PWDG9614	(German)	
	PWDD9615	(Dutch)	
	PWDW9616	(Swedish)	
'96 COLT/LANCER Workshop Manual chassis	PWME9511	(English)	52B-25
	PWMS9512	(Spanish)	
	PWMF9513	(French)	
	PWMG9514	(German)	
	PWMD9515	(Dutch)	
	PWMW9516	(Swedish)	
'95 L400 Workshop Manual chassis	PWWE9410	(English)	52B-37
	PWWS9411	(Spanish)	
	PWWF9412	(French)	
	PWWG9413	(German)	
	PWWD9414	(Dutch)	
	PWWW9415	(Swedish)	

Manual	Pub. No.	Language	Page(s)
PAJERO Workshop Manual chassis	PWJE9086-F	(English)	52B-38
	PWJF9088F	(French)	
	PWFG9089-F	(German)	
	PWJD9090-F	(Dutch)	
	PWJW9091-F	(Swedish)	
MONTERO Workshop Manual chassis	PWJS087-F	(Spanish)	
SIGMA Workshop Manual chassis	PWGE9004-F	(English)	52B-88
	PWGS9005-F	(Spanish)	
	PWGF9006-F	(French)	
	PWGG9007-F	(German)	
	PWGD9008-F	(Dutch)	
	PWGW9009-F	(Swedish)	

3. Details:

'97 GALANT Workshop Manual chassis, Page 52B-32

'96 COLT/LANCER Workshop Manual chassis, Page 52B-25

'95 L400 Workshop Manual chassis, Page 52B-37

PAJERO Workshop Manual chassis, Page 52B-38

SIGMA Workshop Manual chassis, Page 52B-88

AIR BAG MODULES AND CLOCK SPRING

Caution

1. Disconnect the battery (-) terminal and wait for 60 seconds or more before starting work. Furthermore, the disconnected battery terminal should be covered with tape to insulate it. (Refer to P.52B-4.)
2. Never attempt to disassemble or repair the air bag modules or clock spring. If faulty, replace it.
3. Do not drop the air bag modules or clock spring or allow contact with water, grease or oil.
Replace it if a dent, crack deformation or rust is detected.
4. The air bag modules should be stored on a flat surface and placed so that the air bag deployment surfaces are facing upward.
5. Do not expose the air bag modules to temperatures over 93°C.
6. When the driver's-side and passenger's-side air bags have been deployed, the air bag modules (driver's-side and passenger's-side) should be replaced with new modules. When a side air bag has been deployed, the front seat back assembly (driver's seat or passenger's seat) should be replaced with a new assembly.
7. Wear gloves and safety glasses when handling air bags that have already deployed.
8. An undeployed air bag module should only be disposed of in accordance with the procedures (Refer to P.52B-42.)

<Added>

Check the clock spring, and if faulty, replace it with a new part.

REMOVAL AND INSTALLATION

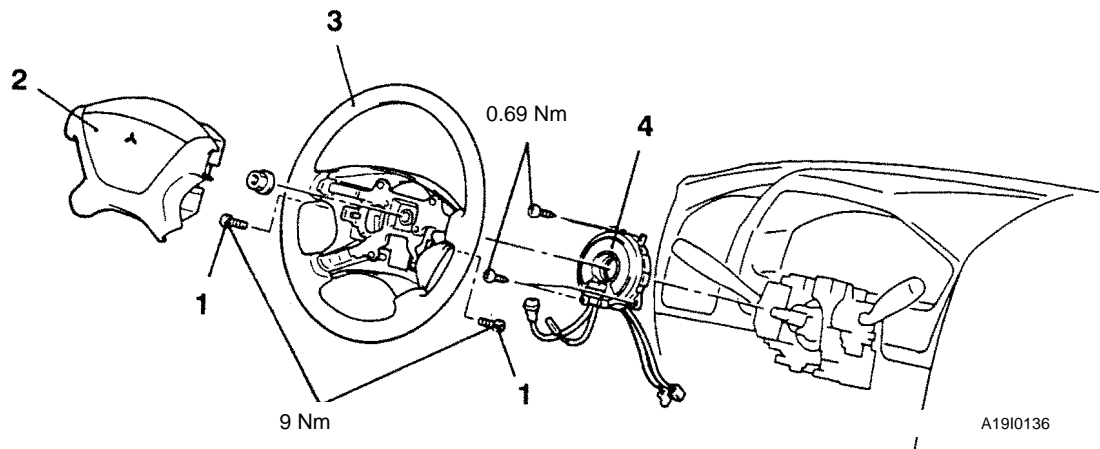
<Side air bag module>

For removal and installation of the front seat back assembly with side air bag module, refer to GROUP 52A - Seat.

<Air bag module (driver's side), clock spring>

Pre-removal Operation

After setting the steering wheel and the front wheels to the straight ahead position, remove the ignition key.



A19I0136

Air bag module removal steps

- ▶ D ◀ • Post-installation inspection
- Negative (-) battery cable connection
- 1. Air bag module mounting screw (Torx screw)
- ◀ A ▶
- ▶ A ◀ 2. Air bag module
- Pre-installation inspection

Clock spring removal steps

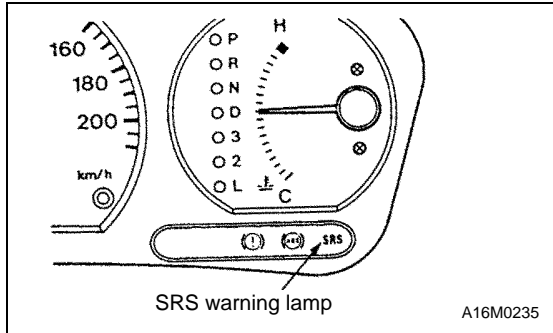
- ▶ D ◀ • Post-installation inspection
- Negative (-) battery cable connection
- 1. Air bag module mounting screw (Torx screw)
- ◀ A ▶
- ◀ B ▶ 2. Air bag module
- ▶ C ◀ 3. Steering wheel
- Lower cover, column cover (Refer to GROUP 52A - Instrument Panel.)
- ◀ C ▶ 4. Clock spring
- ▶ B ◀ • Pre-installation inspection
- ▶ A ◀

INSTALLATION SERVICE POINTS**▶ A ◀ SRS-ECU INSTALLATION****Caution**

The SRS may not activate if SRS-ECU is not installed properly, which could result in serious injury or death to the vehicle's driver or front passenger.

▶ B ◀ POST-INSTALLATION INSPECTION

1. Reconnect the negative battery terminal.
2. Turn the ignition key to the "ON" position.
3. Does the "SRS" warning lamp illuminate for about 7 seconds, and then remain extinguished for at least 5 seconds after turning OFF?
4. If yes, SRS system is functioning properly.
If no, consult page 52B-6

**INSPECTION**

52400220062

- Check the SRS-ECU and brackets for dents, cracks or deformation.
- Check connector for damage, and terminals for deformation.

Caution

If a dent, crack, deformation or rust is discovered, replace the SRS-ECU with a new one.

NOTE

For checking of the SRS-ECU other than described above, refer to the section concerning troubleshooting. (Refer to P.52B-6.)

AIR BAG MODULES AND CLOCK SPRING

52400240112

Caution

1. Disconnect the battery (-) terminal and wait for 60 seconds or more before starting work. Furthermore, the disconnected battery terminal should be covered with tape to insulate it. (Refer to P.52B-4.)
2. Never attempt to disassemble or repair the air bag modules or clock spring. If faulty, replace it.
3. Do not drop the air bag modules or clock spring or allow contact with water, grease or oil.
Replace it if a dent, crack deformation or rust is detected.

4. The air bag modules should be stored on a flat surface and placed so that the air bag deployment surfaces are facing upward.
Do not place anything on top of it.

5. Do not expose the air bag modules to temperatures over 93°C.

6. After deployment of an air bag, replace the clock spring with a new one.

7. Wear gloves and safety glasses when handling air bags that have already deployed.

8. An undeployed air bag module should only be disposed of in accordance with the procedures (Refer to P.52B-34.)

<Correct>

After deployment of an air bag, replace the air bag modules. Check the clock spring, and if faulty, replace it with a new part.

AIR BAG MODULES AND CLOCK SPRING

Caution

1. Never attempt to disassemble or repair the air bag modules or clock spring.
If faulty, replace it.
2. Do not drop the air bag modules or clock spring or allow contact with water, grease or oil.
Replace it with a new one if a dent, crack deformation or rust is detected.
3. The air bag modules should be stored on a flat surface and placed so that the pad

surfaces is facing upward.

Do not place anything on top of it.

4. Do not expose the air bag modules to temperatures over 93°C. **<Incorrect>**

5. **After deployment of an air bags, replace the clock spring with a new one.**

6. Wear gloves and safety glasses when handling air bags that have already deployed.

7. An undeployed air bag module should only be disposed of in accordance with the procedures (Refer to P.52B-43.)

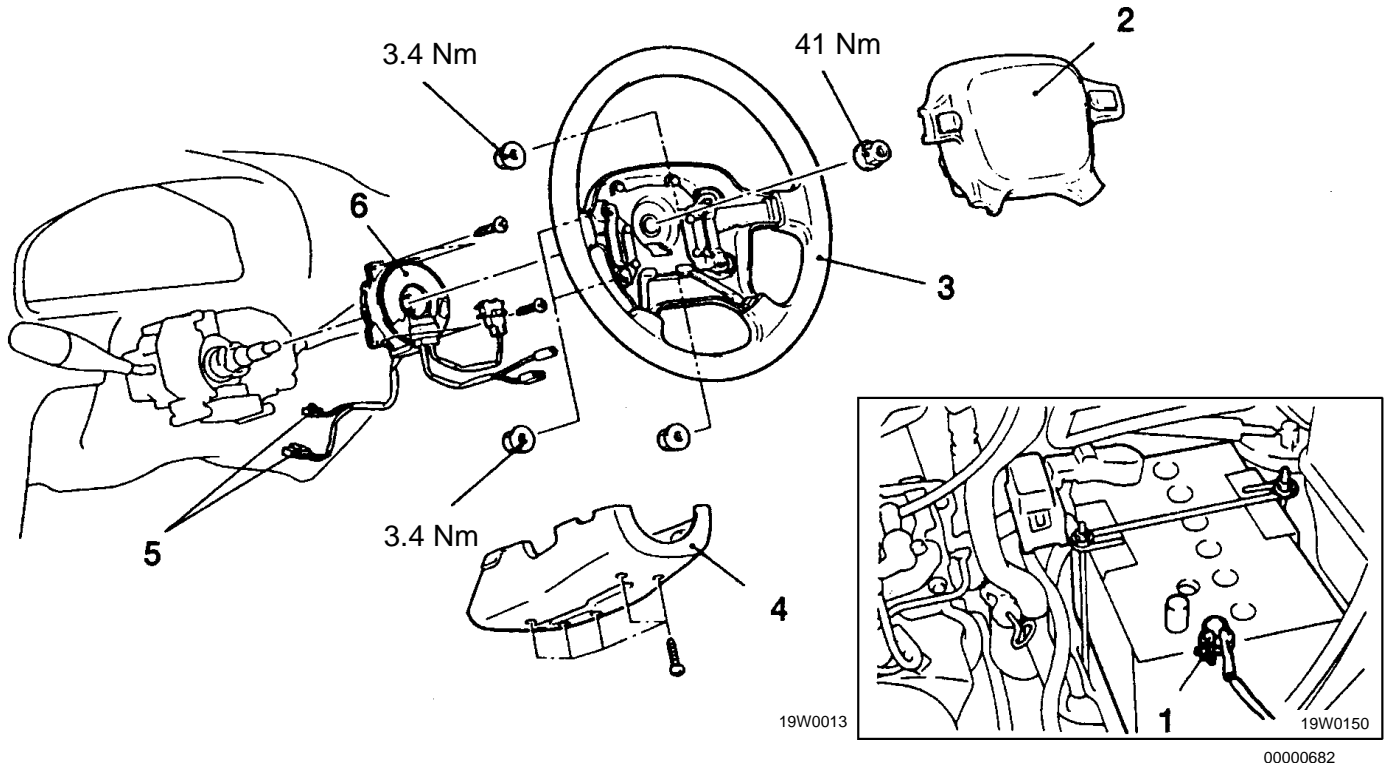
<Correct>

REMOVAL AND INSTALLATION

Pre-removal Operation

- After setting the wheel and the front wheels to the straight ahead position, remove the ignition key.

After deployment of an air bag, replace the air bag modules. Check the clock spring, and if faulty, replace it with a new part.



Air bag module removal steps

- | | |
|-----|--|
| ▶E◀ | • Post-installation inspection |
| ◀A▶ | 1. Negative (-) battery cable connection |
| ◀B▶ | 2. Air bag module |
| ▶A◀ | • Pre-installation inspection |

Clock spring removal steps

- | | |
|-----|--|
| ▶E◀ | • Post-installation inspection |
| ◀A▶ | 1. Negative (-) battery cable connection |
| ◀B▶ | 2. Air bag module |
| ◀C▶ | 3. Steering wheel |
| | 4. Column cover, lower |
| | 5. Clock spring and body wiring harness connection |
| ◀D▶ | 6. Clock spring |
| ▶B◀ | • Pre-installation inspection |
| ▶A◀ | |

AIR BAG MODULES AND CLOCK SPRING

Caution

1. Never attempt to disassemble or repair the air bag modules or clock spring. If faulty, replace it.
2. Do not drop the air bag modules or clock spring or allow contact with water, grease or oil. Replace it if a dent, crack deformation or rust are detected.
3. The air bag modules should be stored on a flat surface and placed so that the pad surfaces is facing upward.

Do not place anything on top of the air bag modules.

4. Do not expose the air bag module to temperature over 93°C (200°F). **<Incorrect>**

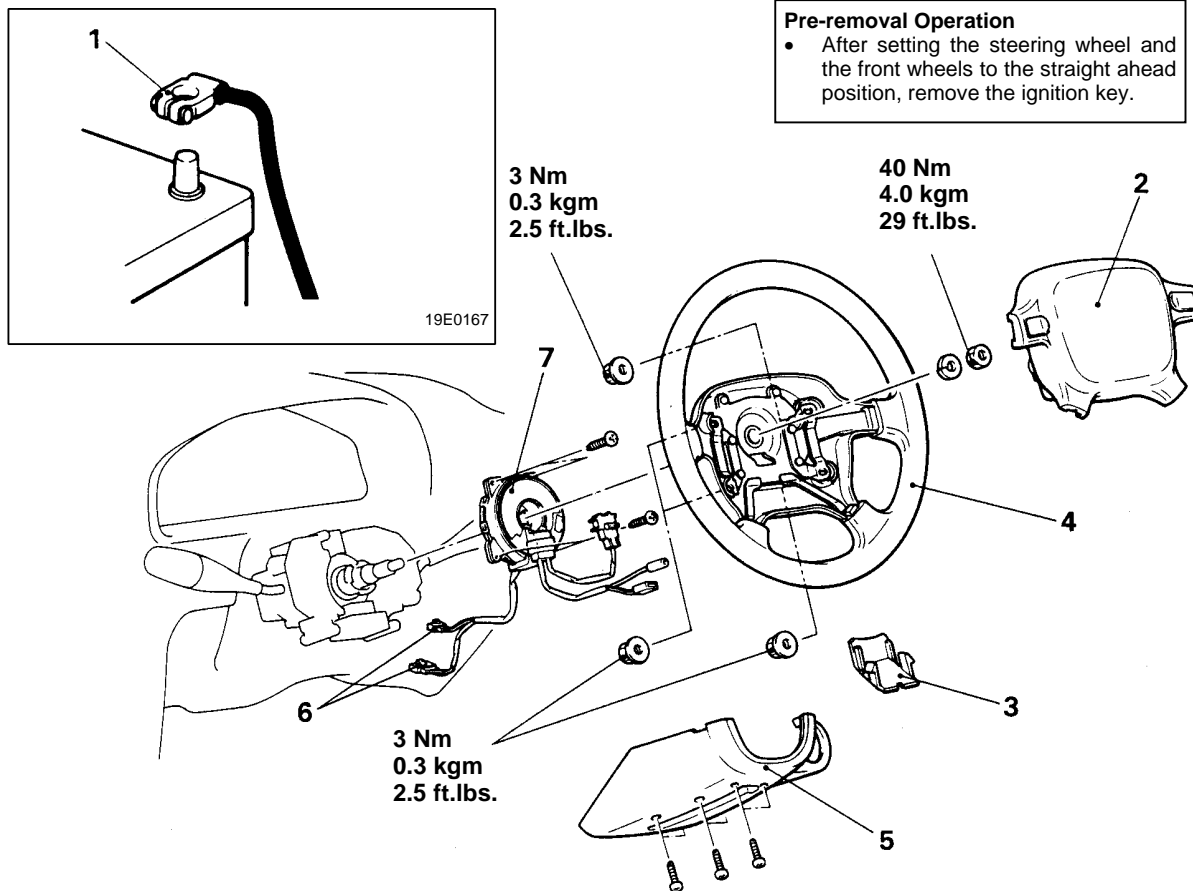
5. **After deployment of an air bags, replace the clock spring with a new one.**

6. Wear gloves and safety glasses when handling an air bag that has deployed.

7. An undeployed air bag module should only be disposed of in accordance with the procedures P.52B-44 - P.52B-47. **<Correct>**

After deployment of an air bag, replace the air bag modules. Check the clock spring, and if faulty, replace it with a new part.

REMOVAL AND INSTALLATION



19E0152

Clock spring removal steps

- | | | |
|---|---|--|
| ↔ | ↔ | • Post-installation inspection |
| ↔ | ↔ | 1. Connection of the negative (-) battery cable to the battery |
| ↔ | ↔ | 2. Air bag module |
| ↔ | ↔ | 3. Cap |
| ↔ | ↔ | 4. Steering wheel |
| ↔ | ↔ | 5. Column cover lower |
| ↔ | ↔ | 6. Clock spring and body wiring harness connection |
| ↔ | ↔ | 7. Clock spring |
| ↔ | ↔ | • Pre-installation inspection |

Air bag module removal steps

- | | | |
|---|---|--|
| ↔ | ↔ | • Post-installation inspection |
| ↔ | ↔ | 1. Connection of the negative (-) battery cable to the battery |
| ↔ | ↔ | 2. Air bag module |

AIR BAG MODULES AND CLOCK SPRING

Caution

1. Never attempt to disassemble or repair the air bag modules or clock spring. If faulty, replace it.
2. Do not drop the air bag modules or clock spring or allow contact with water, grease or oil. Replace it with a new one if a dent, crack deformation or rust is detected.
The air bag modules should be stored on a flat surface and placed so that the pad surfaces is facing upward. Do not place anything on top of it.

4. Do not expose the air bag module to temperature over 93°C (200°F). **<Incorrect>**
5. ~~After deployment of an air bags, replace the clock spring with a new one.~~
6. Wear gloves and safety glasses when handling an air bag that has already deployed.
7. An undeployed air bag module should only be disposed of in accordance with the procedures [P.52B-102 - P.52B-109.].

<Correct>

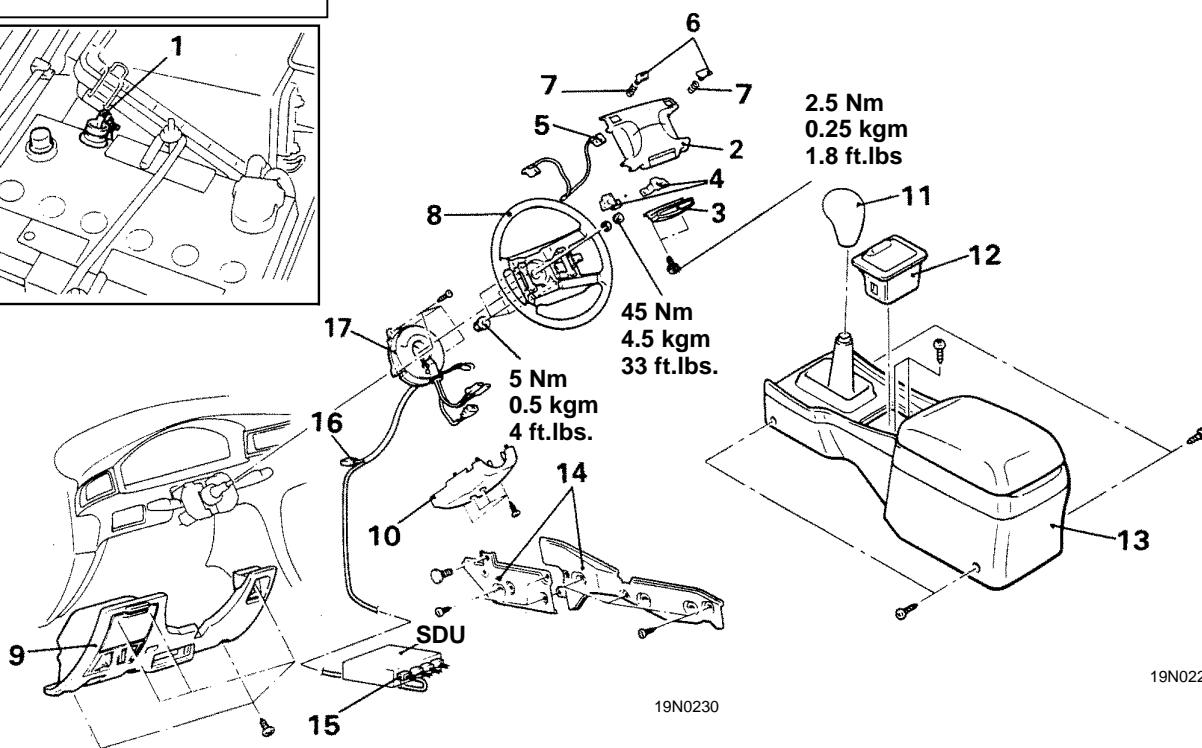
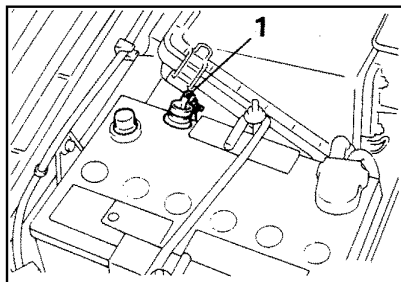
After deployment of an air bag, replace the air bag modules. Check the clock spring, and if faulty, replace it with a new part.

REMOVAL AND INSTALLATION

<Vehicles without front passenger's air bag>
<L.H. drive vehicles>

Pre-removal Operation

- After setting the steering wheel and the front wheels to the straight ahead position, remove the ignition key.



19N0227

19N0230

Air bag module removal steps

- Post-installation inspection
- 1. Connection of the negative (-) battery cable to the battery
- 2. Air bag module
- 3. Cover
- 4. Horn contact plate
- 5. Horn contact plate and wire
- 6. Horn button
- 7. Spring
- Pre-installation inspection

Clock spring removal steps

- Post-installation inspection
- 1. Connection of the negative (-) battery cable to the battery
- 2. Air bag module
- 8. Steering wheel
- 9. Driver side lower panel
- 10. Column cover lower
- 11. Shift lever knob (M/T)
- 12. Ashtray
- 13. Floor console
- 14. Centre reinforcement (LH)
- 15. Clock spring and SRS diagnosis unit connection
- 16. Clock spring and body wiring harness connection
- 17. Clock spring
- Pre-installation inspection